

## Intermittent Motion Servo Shrink Bundler

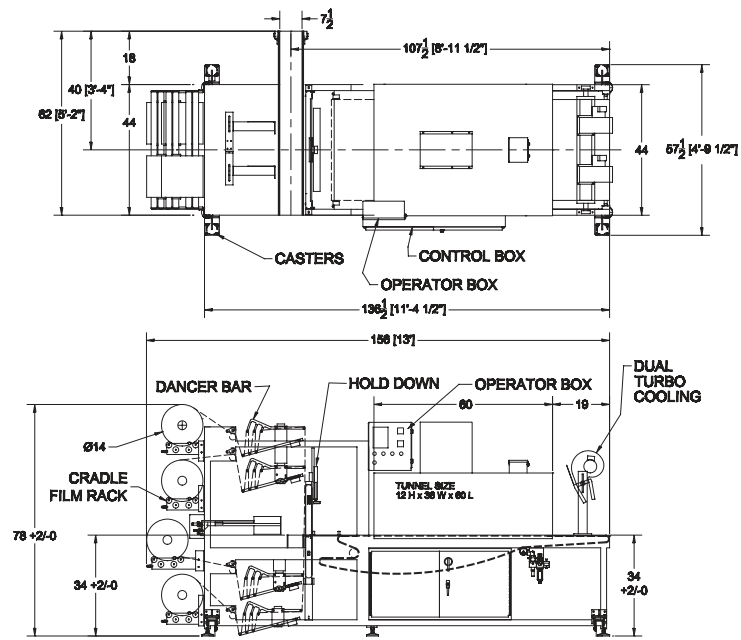
Our ARPAC Brand 708HBD Model is a right-angle, intermittent motion shrink bundler designed specifically for today's pharmaceutical, health and beauty industries.

Ultra-compact in design and economical in price, the 708HBD Model is capable of shrink wrapping up to 40 bundles per minute in a dual lane configuration. This machine offers the flexibility of running in a dual lane mode for higher output, or in a single lane mode to accommodate wider bundles. This model uses motorized pulleys rather than separate drives and chains. This allows for clean, safe operation and a slim machine frame.



### APPLICATIONS

- Beauty products
- Vials
- Cosmetics
- Spices
- Glass bottles
- Spray cans
- Boxes
- Plastic bottles



Final layout may vary.

## FEATURES

- Compact single-frame stainless steel construction
- Heavy-duty system for 24/7 operation
- Right or left-hand mounted infeed and controls
- Allen-Bradley® programmable logic controller
- Simple setup and tool-less changeovers for ease of use and minimal downtime
- Low maintenance conveyor belts do not require tracking adjustments
- Motorized pulleys eliminate chain drives and operate more cleanly, with reduced maintenance cost and less noise
- Single stage right-angle infeed conveyor with Intralox belt
- Tight product transfers allow for small diameter product configurations
- Powered film unwind for consistent film delivery
- Low film alert warns that a film changeover will soon be necessary
- Product hold-down for light products
- Top and bottom film racks accommodate four 14" diameter rolls of film
- No lubrication required for clean and easy maintenance

## OPTIONS

- Turbo cooling for quick product handling after shrink tunnel
- Servo driven main ram
- Standard or custom infeeds

## SPECIFICATIONS

- Speed: Up to 40 packages per minute
- Electrical Power Requirements: 240 or 480VAC, 3 Ph, 60 Hz
- Compressed Air Requirements: 8 SCFM @ 80 psi
- Film Width: 14" maximum
- Film Roll Diameter: 14" maximum with 3" core
- Film Gauge: 1.25-2 mil
- Film Type: Low density polyethylene, clear or randomly printed

## PRODUCT RANGE

- Minimum: 3/4" W x 3/4" L x 1/2" H
- Maximum: 6" W x 11" L x 8" H

## PACKAGE RANGE

- Minimum: 3.5" W x 3/4" L x 1/2" H
- Maximum: 10.5" W x 10" L x 8" H