

Intermittent Motion Case/Tray Wrapper

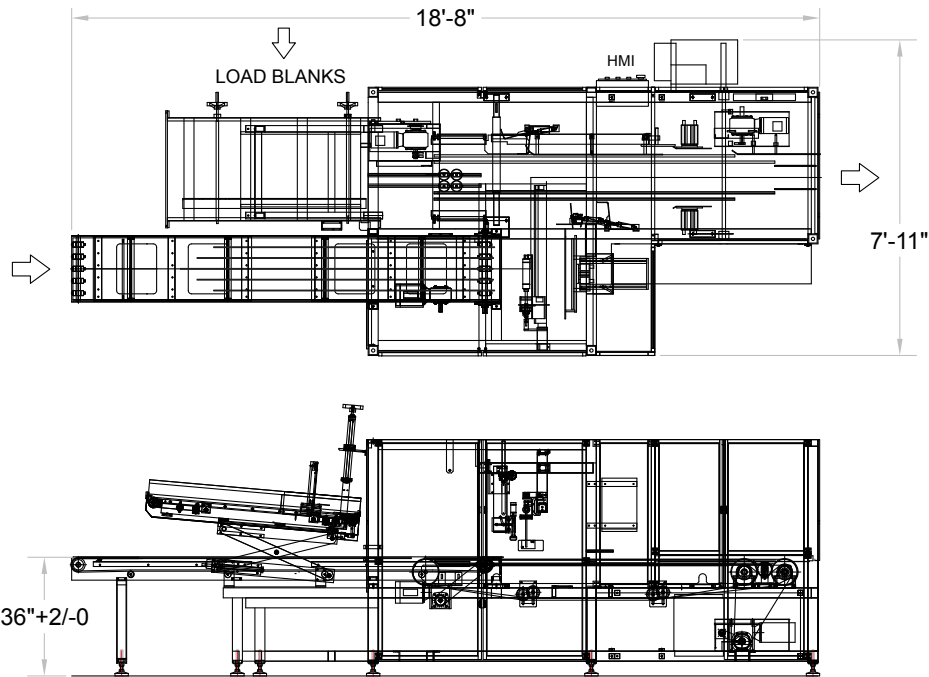
Our EL Model is an intermittent motion end-load tray/case packer is designed to serve a wide range of industries.

At speeds up to 25 trays/cases per minute, these rugged systems help minimize labor requirements and increase production output. The EL combines product accumulation, tray/case forming, loading and sealing into a single compact system, and is well suited to handle a wide range of product configurations and applications including: plastic bottles, cans, boxes, folding cartons, bags and glass jars.



APPLICATIONS

- Automotive
- Beverage
- Building Supplies
- Consumer Goods
- Contract Packaging
- Food
- Health & Beauty
- Material andling
- Printing & Publishing



Final layout may vary, EL Model.

FEATURES

- Intermittent motion end-load tray loader or case packer
- Completely integrated system that collates product, loads into a tray/ case, forms and seals
- Heavy-duty rugged construction designed for high durability and around-the-clock operation
- Laser cut and CNC machined components for maximum precision
- Baked on powder coat finish provides a durable scratch resistant surface and prevents corrosion
- Allen-Bradley® programmable logic controller
- Allen-Bradley® PanelView Plus 600 operator interface with color touchscreen, message display and self-diagnostics
- Digital controls for fast and accurate setup when changing product size
- Designed to integrate with custom line controls
- Gentle product handling with pneumatic or servo-driven system
- Rapid changeovers in less than 30 minutes
- Vacuum blank feed handles variation in corrugated board and can be resupplied while machine is operating
- Durable Intralox conveyor belts eliminate tracking problems
- Nordson ProBlue® hot melt adhesive system for superior applicatio flexibility and adhesion
- NEMA 12 electrical cabinet and controls
- Central point lubrication simplifies preventive maintenance

OPTIONS

- Air or servo lane divider
- Stainless steel construction
- NEMA 4X electrical cabinet for washdown environments
- Various infeed and collation options

SPECIFICATIONS

- Output speed: up to 25 trays or cases per minute (depending upon product specifications)
- Electrical: 460VAC, 3Ph, 60Hz, 25A, 20kW
- Pneumatic: 80psi, 20 CFM
- Inside Case Sizes
- Width (across machine): 9"-18"
- Length (flow direction): 5"-14"
- Height: 4"-8"
- Inside Tray Sizes*
- Width (across machine): 7"-18"
- Length (flow direction): 5"-14"
- Height: 2"-10"
- Tray wall height: 1.5"-4"