

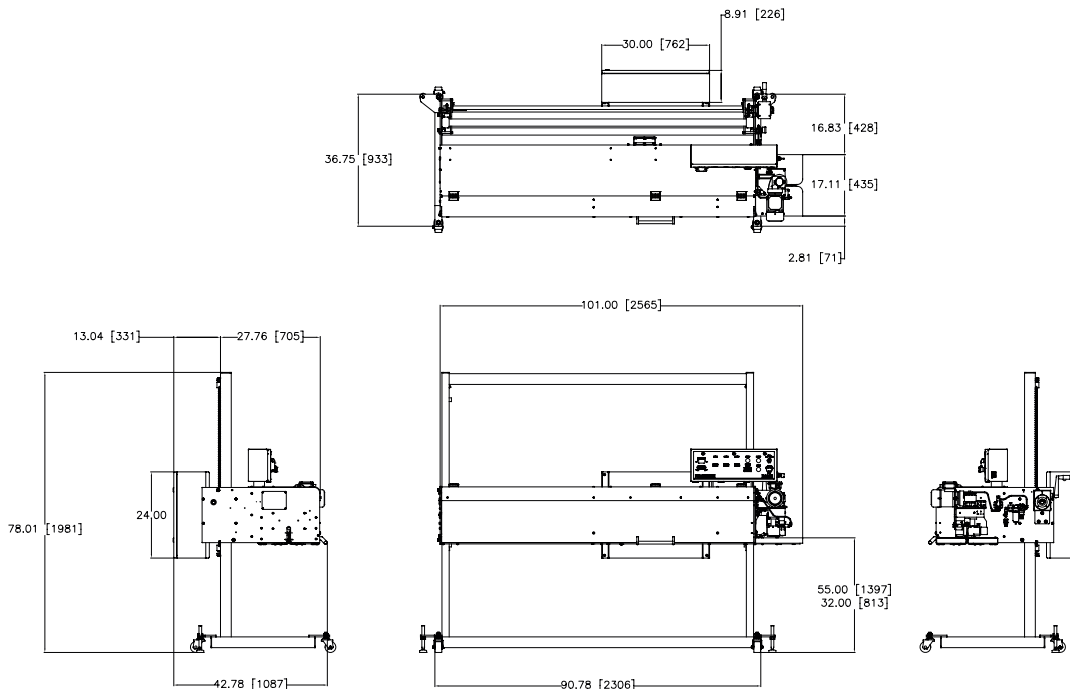
Band Sealer

Our FISCHBEIN Brand B5000 continuous band sealer is designed for high production industrial bagging operations closing heavy weight polyethylene and polypropylene gusseted bags, pillow bags, and pouches at up to 100 linear feet per minute. A band sealer is ideal for producing a high quality, aesthetically pleasing bag top seal. This low-maintenance band sealer features 5 heater banks in two sections that can be selectively enabled and disabled. It deploys a removable sealing section for easy maintenance and cleaning access, quick belt replacement design, user-friendly controls with easy to read digital temperature display, an adjustable height pedestal, and NEMA 12 rated electrics.



APPLICATIONS

- Bakery Mixes
- Fertilizers
- Powdered Dairy Products
- Minerals
- Agricultural Seed
- Pet Food
- Chemicals
- Feed Additives
- Cat Litter



Final layout may vary.

FEATURES

- Sealing Width: ¼" wide (sealing widths up to ½" wide available)
- Digital temperature display in Fahrenheit/Centigrade
- 14" belt driven infeed
- Right to left operation direction
- Adjustable sealing height from 32.5" to 56.5"
- Variable speed drive up to 100 linear feet per minute
- Automatic temperature shutdown
- 2 temperature controllers – 1 for each zone
- NEMA 12 rated electronics
- Standard voltage – 230 V, 3 Ph, 60 Hz
- Teflon fiberglass sealing bands
- Heat bars: five pair (38" total length)
- Cooling bars for downstream handling
- Variable speed drive
- Digital temperature control

BAG TYPES

- Polyethylene and polypropylene
- Gusseted
- Pillow
- Pouch

OPTIONS

- Bag top trimmer
- Airwash bag top air clean + top trimmer
- Water cooling system to minimize dust ingress
- Stainless Steel construction for corrosive environments
- Motorized height adjustment
- Additional creaser wheels: 1/4", 3/8", 1/2"
- Embossing coder
- Additional temperature controllers – maximum 4 total
- Conveyor control, VFD (1 HP)
- Heater fault light
- Left to right feed direction
- NEMA 4 or NEMA 4X
- 460V/ 3Ph / 60Hz
- 575V/ 3Ph / 60Hz

SPECIFICATIONS

- Dimensions: 78"H x 103"L x 37"D
- Shipping weight: 1500 lbs (1900 lbs in SS)
- Speed: up to 100 linear feet per minute
- Electrical: 230 V, 3 Ph, 60 Hz,
- FLA: 30.0 A at 230 V, 15.0 A at 460 V