

Intermittent Motion Vertical Form, Fill & Seal Baggers

The nVenia Axion Series Intermittent Motion Vertical Form, Fill & Seal (VFFS) machines are engineered to produce high-quality pillow, side-gusset, and quattro bags at speeds of up to 90 bags per minute in a single-tube configuration. For higher throughput, the Axion is also available in a twin-tube design, delivering added capacity and built-in redundancy — all within a smaller footprint than two separate machines.

Versatile enough to handle both food products such as coffee, nuts, and snack foods, and non-food items like hardware, pet food, and chemicals, the Axion Series is built with 304 stainless steel product contact surfaces and precision servo-driven motion for smooth operation and reliable seals.

When paired with a nVenia dosing system such as a combination weigher, linear scale, or auger filler, the Axion Series consolidates control of the entire line into a single, 15-inch, icon-based HMI.

Standard features include advanced film tracking, motorized film unwind, automatic stop on film runout, and rapid 5-minute changeovers. Optional features range from reclosable systems, carry handles, and nitrogen flushing to thermal transfer printing, label application, valve insertion, and more.



Single Tube

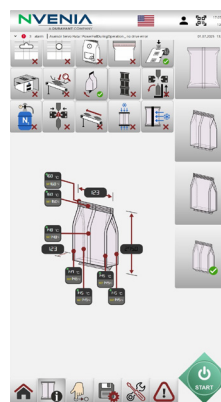


Twin Tube

Intuitive Icon Based HMI Interface

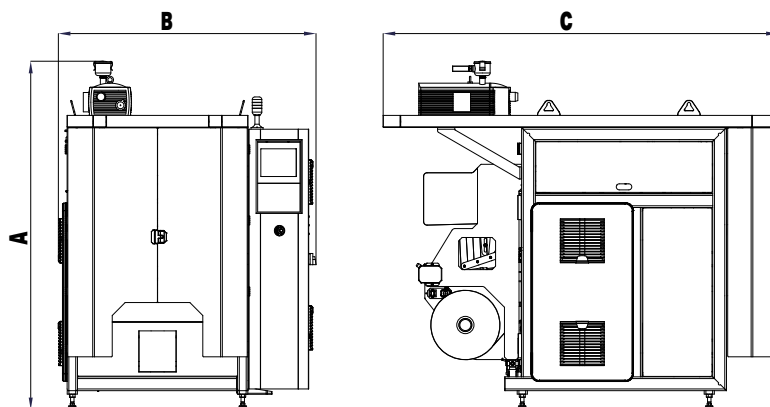


Operational Settings



Bag Settings

DIM.:	A	B	C
IMSS49S	75"	58"	91"
IMSS413S	86"	64"	91"
IMSS417S	99"	71"	91"
IMSS421S	109"	78"	91"
IMST49S	75"	97"	91"
IMST413S	86"	109"	91"
IMQS47S	83"	58"	91"
IMQS48S	102"	64"	91"
IMQS412S	112"	71"	91"
IMQT47S	75"	97"	91"
IMQT48S	86"	109"	91"



Final layout may vary.

FEATURES

- Intuitive 15" icon-based HMI with centralized line control when paired with a nVenia dosing system
- Speeds up to 90 bags per minute in single-tube configuration
- Servo motors on all major motion points
- Tool-less changeover for film rolls, forming tubes, and seal jaws
- Options include printing, vacuum drive belts, and air conditioning cabinet

SPECIFICATIONS

- 480 VAC 3-Phase 60Hz
- 10 CFM 90PSI Clean Dry Air

TECHNICAL DATA

	Operation	Seal	Tube	Min Bag Width	Max Bag Width	Min Bag Length	Max Bag Length	Fold & Seal	Max Operational Speed (bags/min)	Pillow Bag	Side Gusset Bag	Flat Bottom Gusset Bag	Quad / Quattro Bag
IMSS49S	IM	S	S	3.25	9.75	5	15.5	S	90	Y	Y	Y	
IMSS413S	IM	S	S	3.25	13.25	5	23.5	S	70	Y	Y	Y	
IMSS417S	IM	S	S	3.25	17.25	5	27.5	S	40	Y	Y	Y	
IMSS421S	IM	S	S	3.25	21.25	5	35.25	S	20	Y	Y	Y	
IMST49S	IM	S	T	3.25	9.75	5	15.5	S	180	Y	Y	Y	
IMST413S	IM	S	T	3.25	13.25	5	23.5	S	140	Y	Y	Y	
IMQS47S	IM	Q	S	4	7	5	15.5	S	50				Y
IMQS48S	IM	Q	S	4	8.5	5	25.5	S	30				Y
IMQS412S	IM	Q	S	4	12.5	5	31.25	S	20				Y
IMQT47S	IM	Q	T	4	7	5	15.5	S	180				Y
IMQT48S	IM	Q	T	4	8.5	5	23.5	S	140				Y