

Continuous Motion Vertical Form, Fill & Seal Baggers

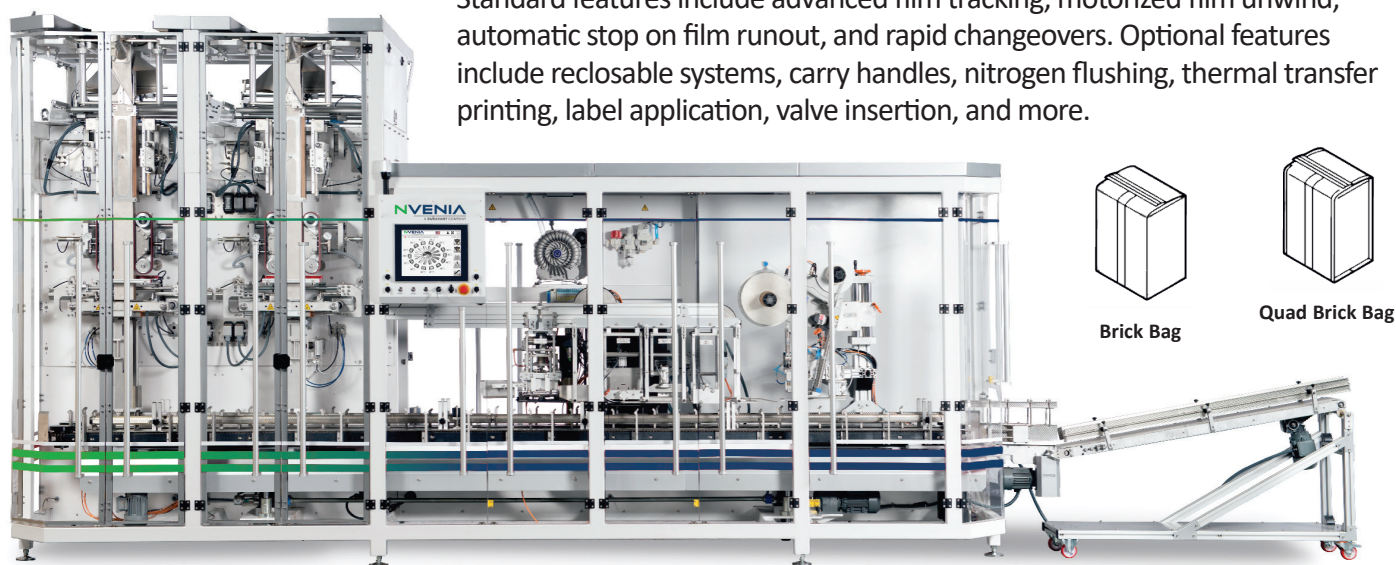
The nVenia Optima Series Continuous Motion Vertical Form, Fill & Seal (VFFS) Machines produce high-quality brick and quad-seal brick bags at speeds up to 70 bags per minute in a single-tube configuration. A twin-tube option adds capacity and redundancy in a smaller footprint than two separate machines.

Brick bags, with folded and taped top seals, offer both shelf appeal and durability for palletized trays. The Optima handles food items such as tea, coffee, pasta, and nuts, as well as industrial and specialty products like hardware, pet food, and chemicals.

A carousel-style pocketed conveyor enables brick bag formation while performing product settling, air expelling, top film trimming, and top seal fold-over and taping. The machine also offers quick changeovers, recipe-driven bag settings, automatic 3D carousel pocket adjustment, and the ability to run traditional pillow and side-gusset bags.

Built with 304 stainless steel contact surfaces and precision servo-driven “D” motion, the Optima ensures smooth operation and consistent sealing at high speeds. Paired with a nVenia dosing system—such as a combination weigher, linear scale, or auger filler—it centralizes line control through a 15” icon-based HMI.

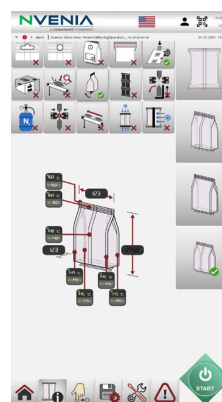
Standard features include advanced film tracking, motorized film unwind, automatic stop on film runout, and rapid changeovers. Optional features include reclosable systems, carry handles, nitrogen flushing, thermal transfer printing, label application, valve insertion, and more.



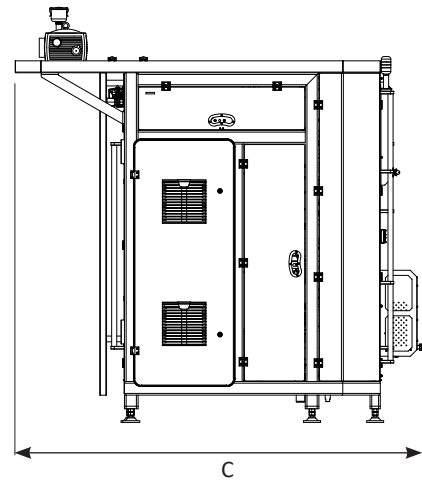
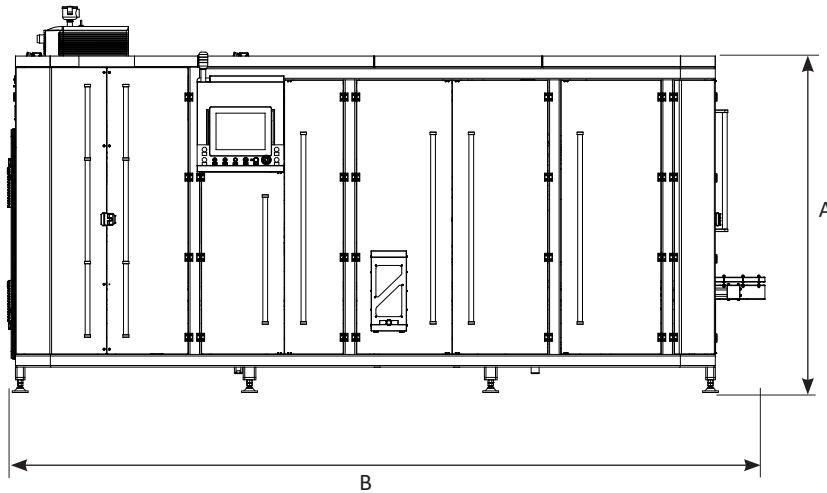
Intuitive Icon Based HMI Interface



Operational Settings



Bag Settings



Final layout may vary.

DIM.:	A	B	C
CMSS46FS	84	188	104
CMST46FS	84	226.5	104
CMQS46FS	114	188	104
CMQT46FS	114	226.5	104

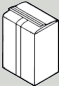

FEATURES

- Intuitive 15" icon-based HMI with centralized line control when paired with a nVenia dosing system
- Speeds up to 70 bags per minute in single-tube configuration
- Flexible bag formats, including brick, pillow, and side-gusset styles
- Servo-driven "D" motion seal jaws for longer dwell time and consistent seals
- Tool-free changeover for film rolls, forming tubes, and seal jaws

SPECIFICATIONS

- 480 VAC 3-Phase 60Hz
- 10 CFM 90PSI Clean Dry Air

TECHNICAL DATA

	Operation	Seal	Tube	Min Bag Width	Max Bag Width	Min Bag Length	Max Bag Length	Fold & Seal	Max Operational Speed (bags/min)	Brick Bag 	Qad Brick Bag 
CMSS46FS	CM	S	S	4	6.25	5	12.75	FS	70	Y	
CMST46FS	CM	S	T	4	6.25	5	12.75	FS	70	Y	
CMQS46FS	CM	Q	S	4	6.25	5	12.75	FS	70		Y
CMQT46FS	CM	Q	T	4	6.25	5	12.75	FS	70		Y